
SILVERLINE EDITION

Understated elegance majestically interpreted



BAUWERK®
Parquet



SILVERLINE EDITION

There is luxury in simplicity
and restraint: the majestic
understatement of a wooden floor
implies style and individuality.
Reduction to the bare essentials
becomes the measure
of all things.

‘The secret of elegance
is in the simplicity of things.’

CHRISTIAN DIOR

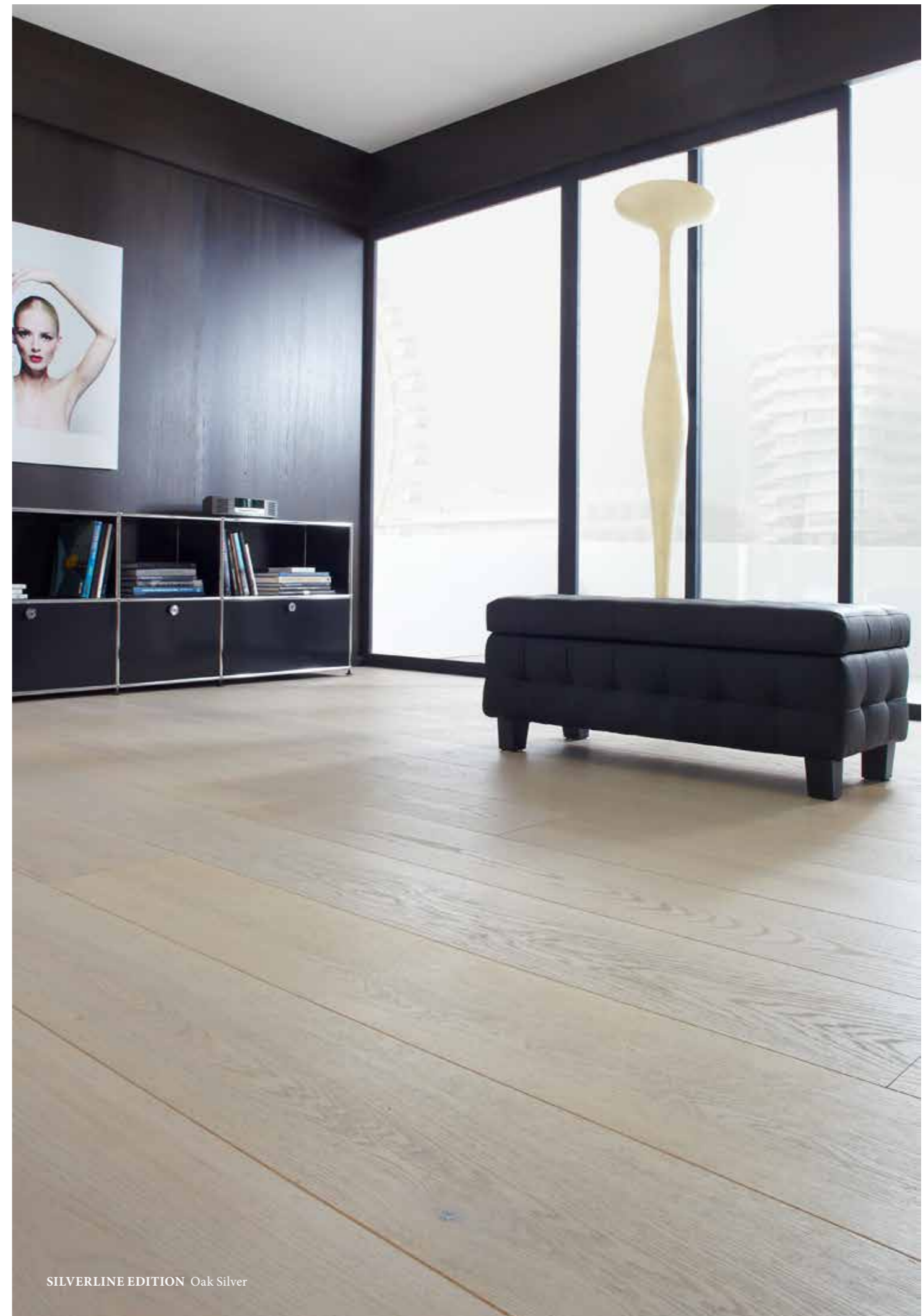


Product detail I

HAND-SELECTED EXCLUSIVITY

The exclusive planks of the Silverline Edition are made of particularly well-formed and straight oak trees, which are carefully hand-picked. Straight, fine lines result lengthwise from the careful sawing of the boards. Flawless planks in calm gradings of this length are very uncommon, because oaks grow particularly slowly, and producing timber for this format takes decades. The characterful sorting process emphasizes the uniqueness of this material – wood – and thus each Silverline floor has its own unique story to tell.

I



SILVERLINE EDITION Oak Silver

Product detail II

GENEROUS FORMATS

At almost three meters, the impressive length of the Silverline boards is emphasized through special beveling, which run along the entire length of the board. They underscore the exceptionally generous dimensions of a Silverline floor, amplify the natural effect of the spatial architecture, and guide the light in the room.

II



Product detail III

EXCLUSIVE REFINEMENT

The colours and the surface finishing of the Silverline Edition are just as exceptional as the length of the individual boards. Over the course of time, a very special patina emerges – interesting reflections develop along with a depth that increases with age.

III



SILVERLINE EDITION Oak Crema

Product detail IV

MADE IN SWITZERLAND

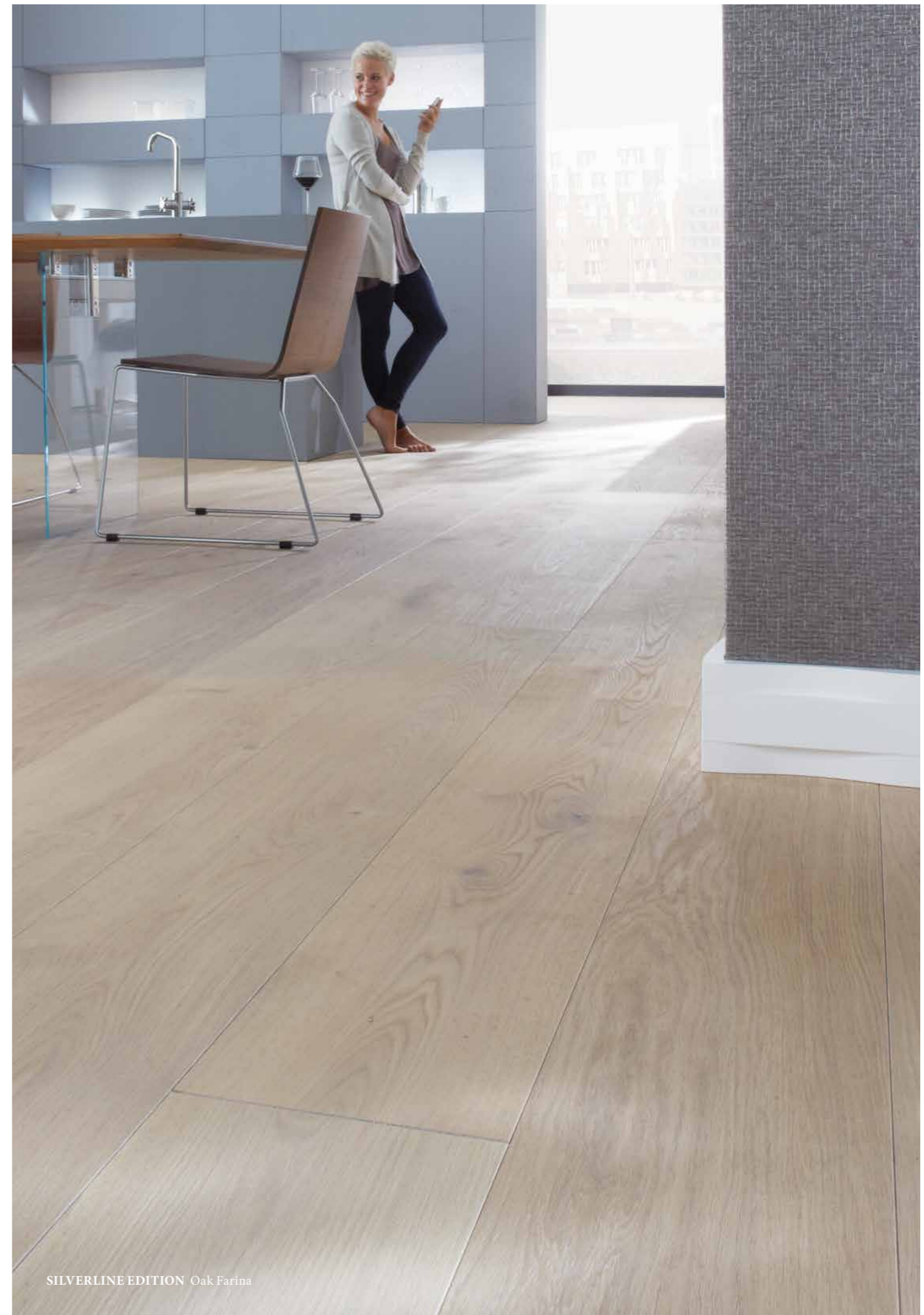
Refined, large-format floor are unforgiving when there are flaws. Therefore, each individual board in the Silverline Edition is processed exclusively by our master team in Switzerland. They guarantee the outstanding quality of the Silverline Edition by working with great care. Even wood drying requires great experience and patience: if rushed, it will result in undesirable cracks even with calmer gradings.




THE SILVERLINE MONOGRAM

Every Silverline floor is very carefully manufactured in Switzerland. The exclusive quality is guaranteed with a solid silver mono-gram, which is set in the floor or given to the customer personally.

IV



SILVERLINE EDITION Oak Farina



‘I am not interested
in luxury. I used my money
to buy my freedom.’

AUDREY HEPBURN

Silverline Edition 2800 x 260 x 11 mm

COLOUR OVERVIEW

Elegant colours, from bright silver to warm gold, accentuate the exclusivity of the Silverline Edition. Unusual plank lengths and calm gradings require a gentle production process, and give the Silverline Edition its special character.

All the colours of the Silverline Edition are available in a calm and a lively grading (excl. Avorio, only in a lively grading)



SILVER

Oak deep brushed, beveled - 4 sides, natural oiled



FARINA

Oak deep brushed, beveled - 4 sides, natural oiled



CREMA

Oak brushed, beveled - 4 sides, B-Protect®



AVORIO

Oak deep brushed, beveled - 4 sides, natural oiled



OAK

deep brushed, beveled - 4 sides, natural oiled



GOLD

Oak deep brushed, beveled - 4 sides, natural oiled



SILVERLINE EDITION Oak Avorio

‘What separates style from
fashion is quality.’

GIORGIO ARMANI



Reference

URBAN VILLA ALLENMOOS

19th- and 20th-century urban villas are just as much a part of Zurich's cityscape as Lake Zurich or the white-and-blue trams.

A playful combination of buildings, new and old.

One of these is the Allenmoos villa, in the Allenmoos district of Zurich Oerlikon. In 2012, a couple decided to buy the villa and add a garden pavilion of their own design to the building. Since 2014, this new building now nestles up to the old town wall in the garden, complementing its style in a contemporary fashion. The transitions between the rooms have a fluid design. The continuous Silverline Edition Oak Silver parquet floor by Bauwerk Parkett adds gentle colour highlights. The deep brushed and natural oiled planks with a length of almost three metres subtly emphasise the spaciousness of the new rooms, and connect the new parts of the building with the old. The steps between the new and old parts of the building are made out of smoked, deep brushed and natural oiled Villapark Oak and are reminiscent of a step stool, creating a playful connection between the two areas.



Product	Silverline Edition Oak Silver, calm grading
Architect	Von Ballmoos Krucker Architekten AG
Builder	Tobias Hestler
Floor installer	Parkett Schnyder
Photos	Bruno Helbling

*Smooth transitions
from old to new.*





Design is an important form of communication. People use design to speak to each other and to express their way of living and thinking.

Reference

SINGLE-FAMILY HOME IN VILLACH

A family of four created their dream home in Villach, Carinthia. The new building was designed and realised by Hermann Dorn and his architecture firm, Trecolore.

A Personal and stylish retreat

Maintaining privacy on the outside and open space in the interior are some of the aspects that the family felt were important in their new home. The architect designed the building as an L-shape that encloses the garden, providing privacy. It is further enhanced by the small number of openings facing the street and a wooden-slat façade cladding that is projected in front of the windows. A two-floor atrium is at the centre of the house's interior, with the rest of the rooms arranged around it. It connects the ground floor to the upper floor, and the interior to the exterior. The side of the atrium facing the garden is fully glazed, and in summer, the living room can be opened out onto the terrace in front of it.

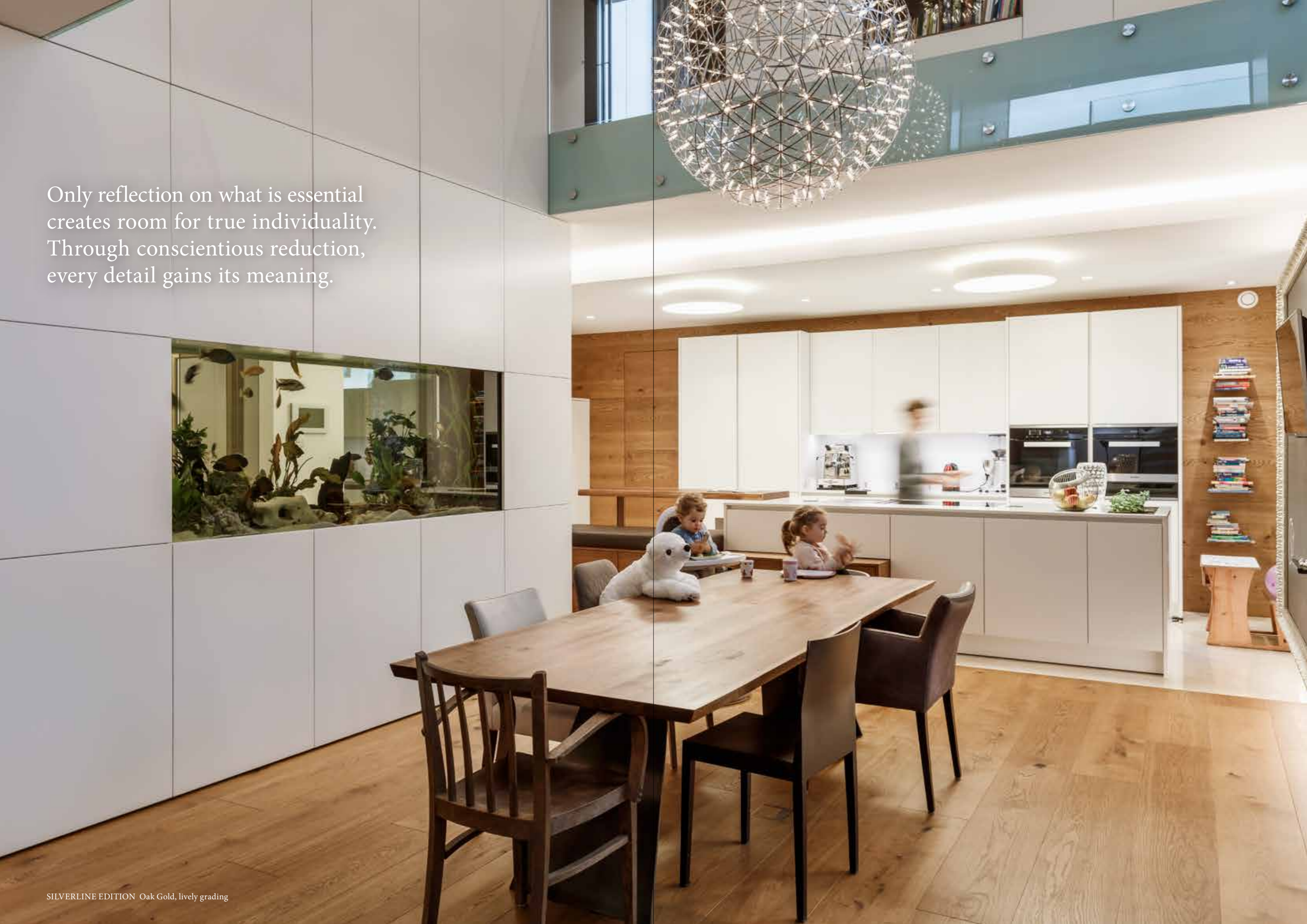


Product	Silverline Oak Gold, lively grading
Architect	Architekturbüro Trecolore
Builder	Dr. Traxler
Floor installer	Trendfloor B.T.S.
Photos	Martin Steinhäler



*Silverline planks
as a unifying element.*

Only reflection on what is essential
creates room for true individuality.
Through conscientious reduction,
every detail gains its meaning.



Reference

CHALET PUNTSCHELLA

The Pontresina village in Engadin (CH) is the location of a spacious loft apartment and holiday home for large families. Natural wood plays a key role in the design, deliberately combined with other materials.

Successful combination of different wood elements

Every wood type used has its own story and appeal. The dining table is made out of beams salvaged from the previous building. A part of the dilapidated old building was rebuilt. The doors and built-in furniture are made out of local Swiss pine. Parquet was used for the floors: the broad strips of the Silverline Edition in lively grading 35 provide a neutral base that fits well with the other types of wood. The architect opted for steamed brushed larch as the material for the ceiling. The entire apartment benefits from a well-designed lighting concept and sensual interior design. Indirect light accentuates the height of the room, which reaches up to 4.5 metres. The free-standing fireplace is open on both sides, separating the room and making it cosier. A successful combination of different elements that blends harmoniously with a breath-taking panoramic view of the mountains.

Product Silverline Edition Oak, lively grading
Architect Fanzun AG
Builder Roland Obrist
Floor installer KUKUMA
Photos Johannes Fredheim



*Pine, larch, oak –
the perfect triad.*



Simple elegance is the perfect combination of luxurious fabrication and consciously celebrated understatement.

Reference

VILLA BREDA

The longevity of a building depends not only on the selection of materials, but also on style. That's why the real art is avoiding fickle trends whenever possible, and building in a well-grounded and discreet way.

Intelligence and sustainability in construction

The discreet, yet powerful architecture and interior designs by Baudoin van Alphen Bergers Architects make it possible to keep this exact balance. In the design of the single-family home in Breda (NL), the focus was thus on producing intelligent and sustainable architecture: as circumstances change, it should be possible to modify the indoor and outdoor spaces of the building throughout its life cycle. This led to the use of low-maintenance materials with little environmental impact.

Bright spaciousness

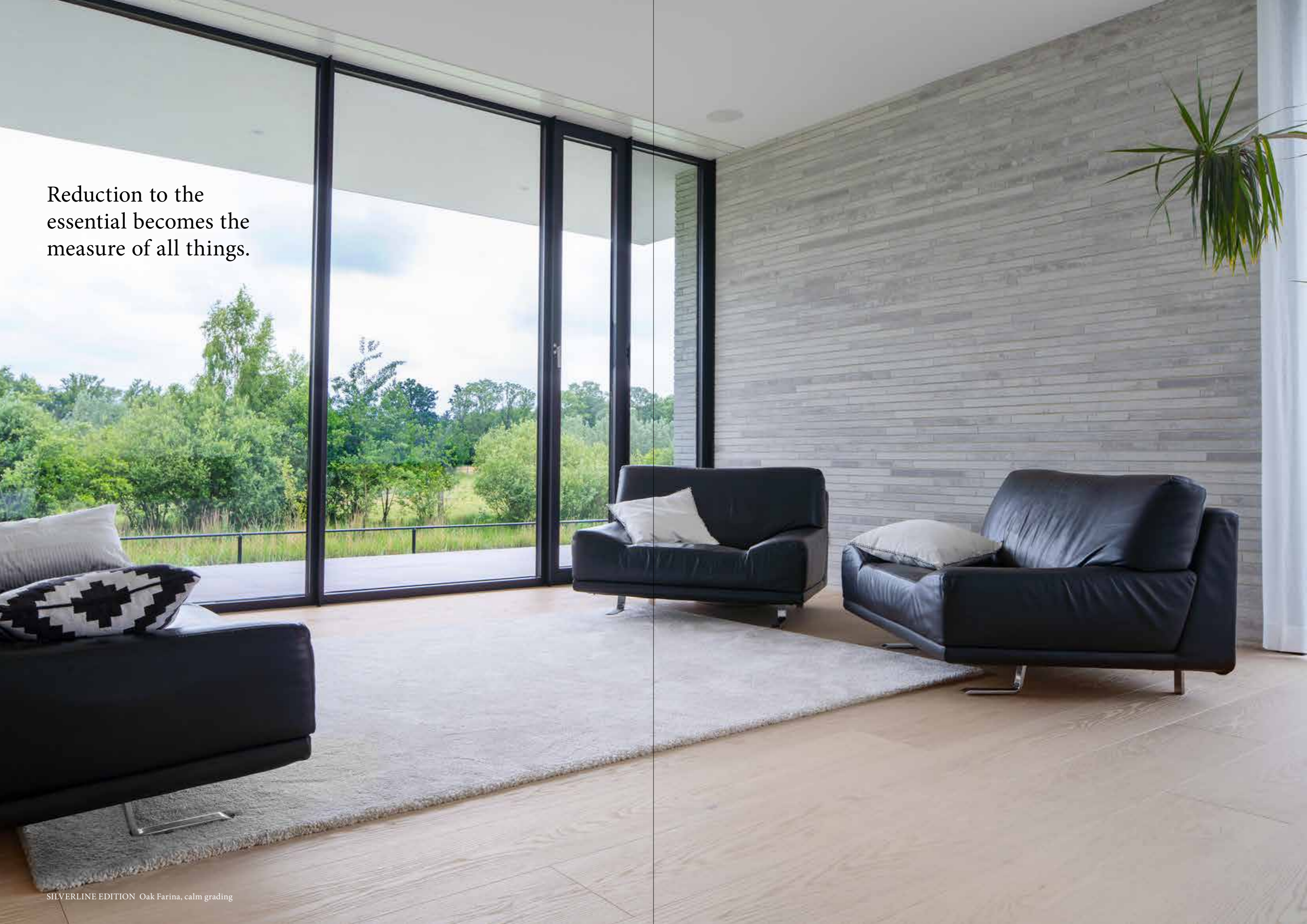
Raising the building 80 cm gave it a spherical touch and the appearance of floating. The loft has a very open design, with its seemingly endless window facade and a view of the boundless green. This is where the large Farina planks of Silverline Edition were put to good use. With a length of 2.80 m and a width of 26 cm, Silverline Edition is the largest format with a calm grading in Bauwerk's collection. A high-precision bevel was added on all four sides of the Silverline planks to further underscore the effect of their length.



Product	Silverline Edition, Oak Farina, calm grading
Architect	Baudoin, Van Alphen Bergers B.V.
Builder	Private
Floor installer	More Floors, Breda
Photos	René van Dongen



Reduction to the essential becomes the measure of all things.



In 1935, Ernst Göhner brought the idea of solid parquet to series production before founding Bauwerk Parkett AG in 1944. Since then, Bauwerk has been researching, developing and manufacturing innovative, aesthetic parquet solutions of the highest quality with great passion and Swiss precision. Original parquet floors from Bauwerk, one of the leading parquet manufacturers in Europe, offer the unique feel of a piece of real nature that provides tangible warmth and healthy living for a perfectly balanced atmosphere in any room. *bauwerk-parkett.com*



PERSONAL
WELL-BEING



INGENIOUS
DESIGN



SWISS
PRECISION



INNOVATIVE
PARQUET SOLUTIONS
